

# **Report on NJIT Self-Study: Preparing for Visit of Team Chair and Visiting Team**

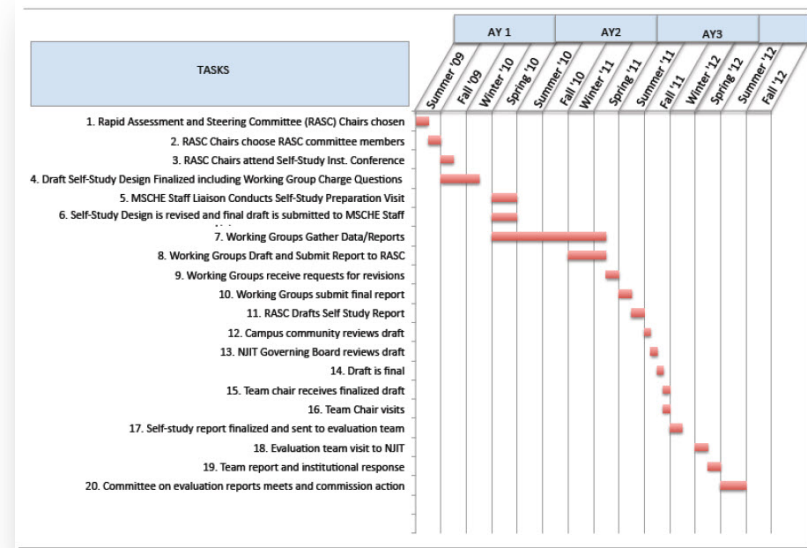
**Presentation to the Administrative Affairs Council**

**October 5, 2011**

**Norbert Elliot and Judith Redling**

# Timeline: Fall 2011 and Spring 2012

- **October 7, 2011: Report released to NJIT Community and Team Chair**
- **November 8-10, 2011: MSCHE Team Chair Preliminary Visit**
- **April 1-4, 2012: MSCHE Team Visit**



# Time Line: Fall 2011-Spring 2012

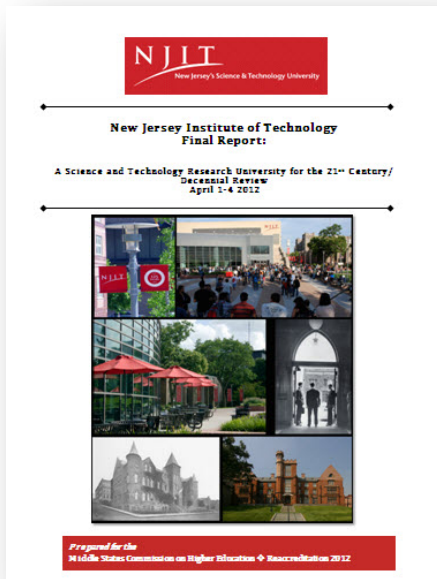
- **Fall 2011**
  - Campus community reviews draft self-study report.
  - Evaluation Team Chair reviews draft self-study report.
  - Institution's governing board reviews draft self-study report.
  - Institution sends draft self-study report to evaluation Team Chair, prior to Chair's preliminary visit.
  - Team Chair makes preliminary visit at least four months prior to team visit. (November 8-10, 2011)
  - Institution prepares final version of the self-study report (February 12, 2012)
- **Spring 2012**
  - Institution sends final report to evaluation team and to MSCHE at least six weeks prior to team visit.
  - Team visit
  - Team report (oral on April 4, 2012; written by April 14, 2012)
  - Institutional response (written by April 24, 2012)
- **Summer-Fall 2012**
  - Committee on Evaluation Reports meets
  - Commission action released
  - Commission staff notifies the institution, U.S. Department of Education, state agencies, the American Council on Education, and Council for Higher Education Accreditation
  - Staff prepares an updated "Statement of Accreditation Status" (SAS), which serves as the Commission's official public statement

# Summary of Commission Actions

## Summary of Actions a Team May Take or Recommend to the Commission

Is the institution in compliance with the standards?				
If the team's confidential answer is:	Then the team shares the following with the institution in the team report:		And the team shares the following confidentially with the Commission and only in the Chair's confidential Brief:	
	The team must provide this to the institution:	And the team may, at its option, provide this to the institution:	The team must recommend that the Commission take this action:	And the team may, at its option, recommend that the Commission take this action:
Yes ↓		1. Discuss significant accomplishments/progress or exemplary/innovative practices; 2. Offer suggestion(s) for institutional improvement and/or make recommendations	To reaffirm accreditation	To commend the institution for progress to date and/or the quality of its self-study process and/or the quality of the self-study
Yes, the team is confident of the institution's continuing compliance, but the team wants the institution to focus its attention on improvements in certain areas over the next few years. →	Make Recommendation(s)	1. Discuss significant accomplishments, significant progress, or exemplary/innovative practices; 2. Offer suggestion(s) for institutional improvement	To reaffirm accreditation and request that the Periodic Review Report, due June 1 [Year], address [specific issues that need attention or emphasis].	To commend the institution for progress to date and/or the quality of its self-study process and/or the quality of the self-study
Yes, but assurance is needed that the institution is carrying out activities planned or being implemented. →	Make Recommendation(s)	1. Discuss significant accomplishments, significant progress, or exemplary/innovative practices; 2. Offer suggestion(s) for institutional improvement	To reaffirm accreditation and to request a progress report, due by [date], documenting...	1. To request that the Periodic Review Report, due June 1 [Year], address [specific issues that need attention or emphasis]. 2. To commend the institution for progress to date and/or the quality of its self-study process and/or the quality of the self-study
Yes, but the team has concerns about continued institutional compliance with one or more standards. →	Make Recommendation(s)	1. Discuss significant accomplishments, significant progress, or exemplary/innovative practices; 2. Offer suggestion(s) for institutional improvement	To reaffirm accreditation and to request a monitoring report(s), due by [date], documenting...	1. To request that the Periodic Review Report, due June 1 [Year], address [specific issues that need attention or emphasis]. 2. A visit may/will follow submission of the monitoring report. (Note: This is optional, used if verification of institutional status and progress requires on-site review.) 3. To commend the institution for progress to date and/or the quality of its self-study process and/or the quality of the self-study
No, the institution is not in compliance with one or more standards. →	Make Requirement(s)	1. Discuss significant accomplishments, significant progress, or exemplary/innovative practices; 2. Offer suggestion(s) for institutional improvement 3. Make Recommendation(s)	To warn the institution that its accreditation may be in jeopardy and to request a monitoring report(s), due by [date], documenting... A visit will follow submission of the monitoring report	To direct a prompt staff visit to discuss Commission expectations.
The team does not have sufficient information to determine if the institution is in compliance. →	Identify Areas of Insufficient Information	1. Discuss significant accomplishments, significant progress, or exemplary/innovative practices; 2. Offer suggestion(s) for institutional improvement 3. Make Recommendation(s)	To postpone a decision on accreditation, and to request a supplemental information report, due by [date], documenting...	1. A visit may/will follow submission of the supplemental information report. (Note: This is optional, used if verification of institutional status and progress requires on-site review.) 2. To direct a prompt staff visit to discuss Commission expectations.

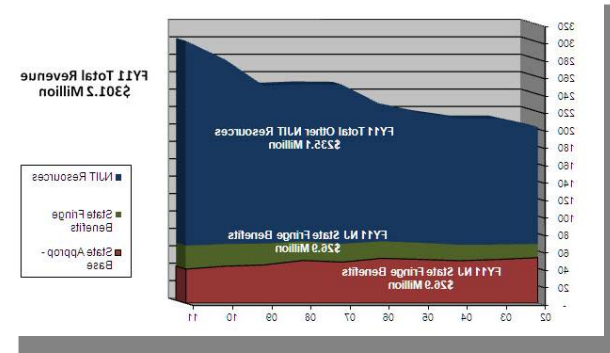
# Tour of Report



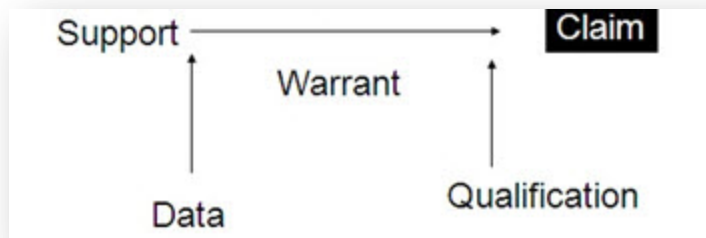
- Standard Addressed
- Executive Summary
- Introduction
- Analytic Exposition
- Conclusion
- Recommendations

Table 1.0: Research and Intellectual Property Metrics Compared to Benchmark Pairs

Rank	Category	2008-09	2009-10	2010-11	2011-12	2012-13	2013-14	2014-15	2015-16	2016-17	2017-18	2018-19	2019-20	2020-21	2021-22	2022-23	2023-24	2024-25	2025-26	2026-27	2027-28	2028-29	2029-30	
1	Alabama University System	100	100	100	100	100	100	100	100	100	100	100	100	100	100	100	100	100	100	100	100	100	100	100
2	Colorado School of Mines	95	95	95	95	95	95	95	95	95	95	95	95	95	95	95	95	95	95	95	95	95	95	95
3	Georgia Institute of Technology	90	90	90	90	90	90	90	90	90	90	90	90	90	90	90	90	90	90	90	90	90	90	90
4	Michigan Technological University	85	85	85	85	85	85	85	85	85	85	85	85	85	85	85	85	85	85	85	85	85	85	85
5	University of Wisconsin	80	80	80	80	80	80	80	80	80	80	80	80	80	80	80	80	80	80	80	80	80	80	80
6	<b>NJIT</b>	75	75	75	75	75	75	75	75	75	75	75	75	75	75	75	75	75	75	75	75	75	75	75
7	Texas Tech University	70	70	70	70	70	70	70	70	70	70	70	70	70	70	70	70	70	70	70	70	70	70	70
8	University of Alaska	65	65	65	65	65	65	65	65	65	65	65	65	65	65	65	65	65	65	65	65	65	65	65
9	University of Alaska Fairbanks	60	60	60	60	60	60	60	60	60	60	60	60	60	60	60	60	60	60	60	60	60	60	60
10	University of Louisiana at Lafayette	55	55	55	55	55	55	55	55	55	55	55	55	55	55	55	55	55	55	55	55	55	55	55
11	University of Maryland Baltimore County	50	50	50	50	50	50	50	50	50	50	50	50	50	50	50	50	50	50	50	50	50	50	50
12	University of Massachusetts Lowell	45	45	45	45	45	45	45	45	45	45	45	45	45	45	45	45	45	45	45	45	45	45	45
13	University of Tennessee	40	40	40	40	40	40	40	40	40	40	40	40	40	40	40	40	40	40	40	40	40	40	40
14	Virginia Polytechnic Institute & State University	35	35	35	35	35	35	35	35	35	35	35	35	35	35	35	35	35	35	35	35	35	35	35
15	Utah State University	30	30	30	30	30	30	30	30	30	30	30	30	30	30	30	30	30	30	30	30	30	30	30
16	Utica Institute of Technology	25	25	25	25	25	25	25	25	25	25	25	25	25	25	25	25	25	25	25	25	25	25	25
17	Utica University	20	20	20	20	20	20	20	20	20	20	20	20	20	20	20	20	20	20	20	20	20	20	20
18	University of North Carolina	15	15	15	15	15	15	15	15	15	15	15	15	15	15	15	15	15	15	15	15	15	15	15
19	University of North Carolina at Charlotte	10	10	10	10	10	10	10	10	10	10	10	10	10	10	10	10	10	10	10	10	10	10	10
20	University of North Carolina at Greensboro	5	5	5	5	5	5	5	5	5	5	5	5	5	5	5	5	5	5	5	5	5	5	5



# Evidence and the Digital Archive



DIGITAL ARCHIVE			
1 STANDARD 1 <input type="checkbox"/>			
ITEM#	AUTHOR	TITLE	REFERENCE DETAILS (Location, Publisher, Date, etc.)
1	Academic Analytics	"Faculty Scholarly Productivity Index"	<a href="#">The Chronicle of Higher Education (2007). Web.</a>
2	Altenkirch, Robert	<a href="#">Campus Gateway Project</a>	Newark, NJ: NJIT, 2006. Web.
3	Altenkirch, Robert	<a href="#">Landscape Master Plan</a>	Newark: NJIT, 2005. Web.
4	Altenkirch, Robert	<a href="#">NJIT Strategic Plan: 2004-2010</a>	Newark: NJIT, 2004. Web.
5	Altenkirch, Robert	<a href="#">NJIT Strategic Plan 2010-2015</a>	Newark: NJIT, 2010. Web.
6	Altenkirch, Robert	<a href="#">The NJIT VISTa Strategic Planning Model</a>	Newark: NJIT, 2002. Web.
7	Altenkirch, Robert	<a href="#">Update on Campus and Neighborhood Enhancements</a>	Newark: NJIT, April 2008.
8	Bishop, Ed, Kathy Kelly, David	<a href="#">Project Orbit</a>	Newark: NJIT, 2010. Web.

# The Road Ahead

- ✓ A collaborative process
  - ✓ Preparing for visits
- ✓ A documentary process
  - ✓ Strengthening the digital archive
- ✓ A generative process
  - ✓ Implementing permanent processes

