

Report on NJIT Self-Study: Preparing for Team Visit

Presentation to the Committee on Academic Affairs

November 16, 2011

Norbert Elliot and Judith Redling

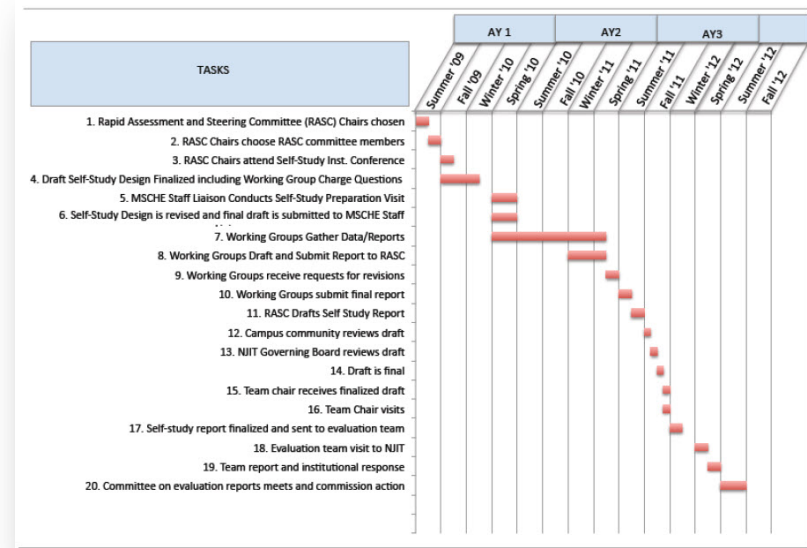


New Jersey's Science & Technology University

THE EDGE IN KNOWLEDGE

Timeline: Fall 2011 and Spring 2012

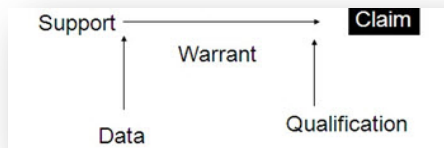
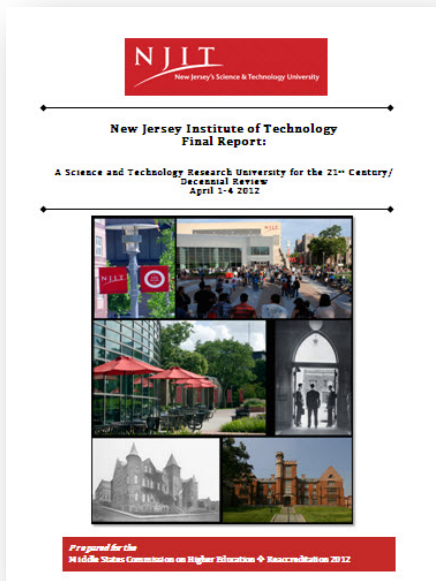
- ✓ **Past: November 8-10, 2011: MSCHE Team Chair Preliminary Visit**
- **Future: April 1-4, 2012: MSCHE Team Visit**



Time Line: Fall 2011-Spring 2012

- **Fall 2011**
 - ✓ Campus community reviews draft self-study report.
 - ✓ Evaluation Team Chair reviews draft self-study report.
 - ✓ Institution's governing board reviews draft self-study report.
 - ✓ Institution sends draft self-study report to evaluation Team Chair, prior to Chair's preliminary visit.
 - ✓ Team Chair makes preliminary visit at least four months prior to team visit. (November 8-10, 2011)
 - ✓ Institution prepares final version of the self-study report (February 12, 2012)
- **Spring 2012**
 - Institution sends final report to evaluation team and to MSCHE at least six weeks (mid-February) prior to team visit.
 - Team visit
 - Team report (oral on April 4, 2012; written by April 14, 2012)
 - Institutional response (written by April 24, 2012)
- **Summer-Fall 2012**
 - Committee on Evaluation Reports meets
 - Commission action released
 - Commission staff notifies the institution, U.S. Department of Education, state agencies, the American Council on Education, and Council for Higher Education Accreditation
 - Staff prepares an updated "Statement of Accreditation Status" (SAS), which serves as the Commission's official public statement

Next Steps: November 16, 2011 to February 12, 2012



- Strengthen Evidence Base
 - Digital Archive
 - Hypertext Version of Report
 - Enhance Claims
- Directions for the Future
 - Refine in terms of strategic planning and sustained commitment

Undergraduate and graduate courses are well-planned in sequence by academic departments, and that process is monitored by NJIT Program Review, analyzed in Chapter 14. Course schedules, including syllabi and textbooks, are available on the webpage of the Office of the Registrar. P. 42



- **Course Catalog Description:**
Prerequisite or corequisite: PTC 601Reviews the major theories of communication and provides strategies for research in the field of Professional and Technical Communication. The course focuses on these research methods: problem statement and hypothesis formulation derived from theory, research design and data generation, existing information sources and their acquisition, and analytic techniques. Students develop analytic methods necessary to create a well-considered thesis proposal. Design and updating of the MSPTC ePortfolio will be required in this seminar.
- **Students taking this class are bound by the NJIT Honor Code**

Course Materials:

Syllabus: [View Syllabus \(.pdf\)](#)
Welcome Letter:
Delivery Mechanisms: [Moodle \(http://moodle.njit.edu\)](http://moodle.njit.edu)

Labs: No lab for this course
Required Book: Social Research Methods: Qualitative and Quantitat
ISBN: ISBN: 0-7819-1403-X
Required Software: PSAAW Statistics 18 Guide to Data Analysis.
Notes: Valuepack: PACKAGE ISBN-13: 9780321725561

Please check the course syllabus for additional course materials requirements.

* back to top

The Road Ahead

- ✓ **A collaborative process**
 - ✓ **Preparing for visit**
 - ✓ Visiting team class, lab, and design studio review.
- ✓ **A documentary process**
 - ✓ **Strengthening the evidence base**
- ✓ **A generative process**
 - ✓ **Implementing permanent, sustainable change**

